

Coronavirus (COVID-19) Information

Update 33: May 22, 2020

The Road Back: Data Determines Dates New Jersey Currently in Stage 1 of Reopening

This morning, Governor Murphy announced that he is signing a new executive order **lifting the limit of outdoor gatherings from 10 to 25 individuals**. Recreational campgrounds – both public and private – can reopen, effectively immediately. Social distancing must be adhered to. **Indoor gatherings remain limited to 10 people (Essential Businesses continue to be exempt from this indoor limit as per Executive Orders 107/122/142).**

STATE OF NJ COVID-19 BUSINESS IMPACT SURVEY

The State of New Jersey is requesting your input to better understand how to assist you in reopening and get you back to work safely and productively. By filling out an [online survey](#) about your operations, you will provide us with valuable insights to inform the State's reopening strategy, and guide the creation of products, services and assistance programs to be made available to businesses across the state.

Survey questions include inquiries about COVID-19's impact on your operations, your business' plans to return to work, and how the state and local governments can support you and your employees in the months ahead.

Complete the [COVID-19 Reopening/Recovery Survey](#) to share more about how COVID-19 has impacted your operations and let New Jersey know how to best help you move forward. Even if you have responded to an earlier survey, it is important to respond again to ensure the most up to date information is provided. Please do not delay—the earlier you respond the more you will guide the recovery process.

[COVID-19 Reopening/Recovery Survey](#)

U.S. DEPARTMENT OF LABOR ADOPTS REVISED ENFORCEMENT POLICIES FOR CORONAVIRUS

As states begin reopening their economies, OSHA has issued two revised enforcement policies to ensure employers are taking action to protect their employees.

First, OSHA is increasing in-person inspections at all types of workplaces. The [new enforcement guidance](#) reflects changing circumstances in which many non-critical businesses have begun to reopen in areas of lower community spread. The risk of transmission is lower in specific categories of workplaces, and personal protective equipment potentially needed for inspections is more widely available. OSHA staff will

continue to prioritize COVID-19 inspections, and will utilize all enforcement tools as OSHA has historically done.

Second, OSHA is revising its previous enforcement policy for recording cases of coronavirus. Under OSHA's recordkeeping requirements, coronavirus is a recordable illness, and employers are responsible for recording cases of the coronavirus, if the case:

- Is confirmed as a coronavirus illness;
- Is [work-related](#) as defined by [29 CFR 1904.5](#); and
- Involves one or more of the [general recording criteria](#) in [29 CFR 1904.7](#), such as medical treatment beyond first aid or days away from work.

[OSHA announcement.](#)

“STAY AT HOME” EXECUTIVE ORDER 107 & 122 (Requiring Face Coverings, Gloves, and Social Distancing & Disinfecting Protocols) STILL IN PLACE

The “Stay at Home” [Executive Order No. 107](#) remains in full effect with additional requirements as stated in [EO 122](#). As per [EO 142](#), non-essential construction and non-essential retail stores with curbside pickup only, can resume Monday, May 18 @ 6AM.

Regarding [Executive Order 122](#), which requires employers to provide face coverings and gloves to employees who are still reporting to the workplace, and not working from home, members are expected to comply with the spirit of this EO. New Jersey's main concern was front of house workers (employees at stores for example).

The state is fully aware that some manufacturing processes may prevent masks and/or gloves to be used. CCNJ recommends member companies to document the reason as to why they cannot be used in certain processes, and to implement a protocol to wipe down or disinfect areas.

While there is no proactive enforcement of the EO, employees can [report any violations](#) in regard to the EO's by an employer via [NJ's COVID-19 portal](#). That is why we stress that member companies communicate directly to employees on how they are complying with the EO and providing a safe work environment, and in cases where a mask or glove is not provided make sure employees are aware of the reason, and given proper guidance on hygiene protocols.

Companies must continue to make sure they are providing the face coverings (and gloves), and that the employees entering the workplace have them. But when they are alone in an office with no one else, there is no requirement to wear the mask. However, some companies have instituted policies requiring employees to wear face coverings 100% of the time while on site. CCNJ expects that these requirements will continue even when NJ begins the process of reopening.

Employees reporting to work are permitted to travel to and from their place of business. **Businesses are encouraged to give each employee a letter indicating that the employee works in an industry permitted to continue operations, and their shift.** Essential employees should have the company letter, and company ID accessible while driving to and from work,

so they can present it with their license if necessary. We suggest the [DHS Guidance to help with the letter](#).

Below you will find new information **highlighted in blue** added since the last update. As well, take some time and explore the many links and information provided below and in previous updates. The state's main COVID-19 information portal is located at <https://covid19.nj.gov/>.

[To access previous updates click here.](#)

Have general questions about COVID-19?

The NJ Poison Control Center and 211 have partnered with the State to provide information to the public on COVID-19:

Call: [2-1-1](#)

Call (24/7): [1-800-962-1253](#)

Text: NJCOVID to 898-211

Visit <https://covid19.nj.gov/> or nj.gov/health for additional information

In support of ongoing COVID-19 efforts, the State Emergency Operations Center has made available an ESF 7 Remote Access Line for private sector inquiries. ESF 7 Remote Access Line: 609-963-6817. For response and resource related requests, OHSP encourages you to work with your local first responder agencies, or your County Office of Emergency Management. [Click here to access the NJOEM County Coordinators directory](#) to find contact information for the local county OEM where your facility is located.

[COVID-19 Information for New Jersey Business](#)




Search for articles...

All Collections > COVID-19/Novel Coronavirus Information for New Jersey Businesses

COVID-19/Novel Coronavirus Information for New Jersey Businesses



Search above for information on COVID-19 and its impact on businesses. Submit a question via the chat function below, and we'll get back to you ASAP.

 36 articles in this collection
Written by Business.NJ.gov Team

Most Recent Guidance Available

How do Executive Orders No. 107 and 108 on closures and social distancing affect my business?

 Written by Business.NJ.gov Team
Updated yesterday

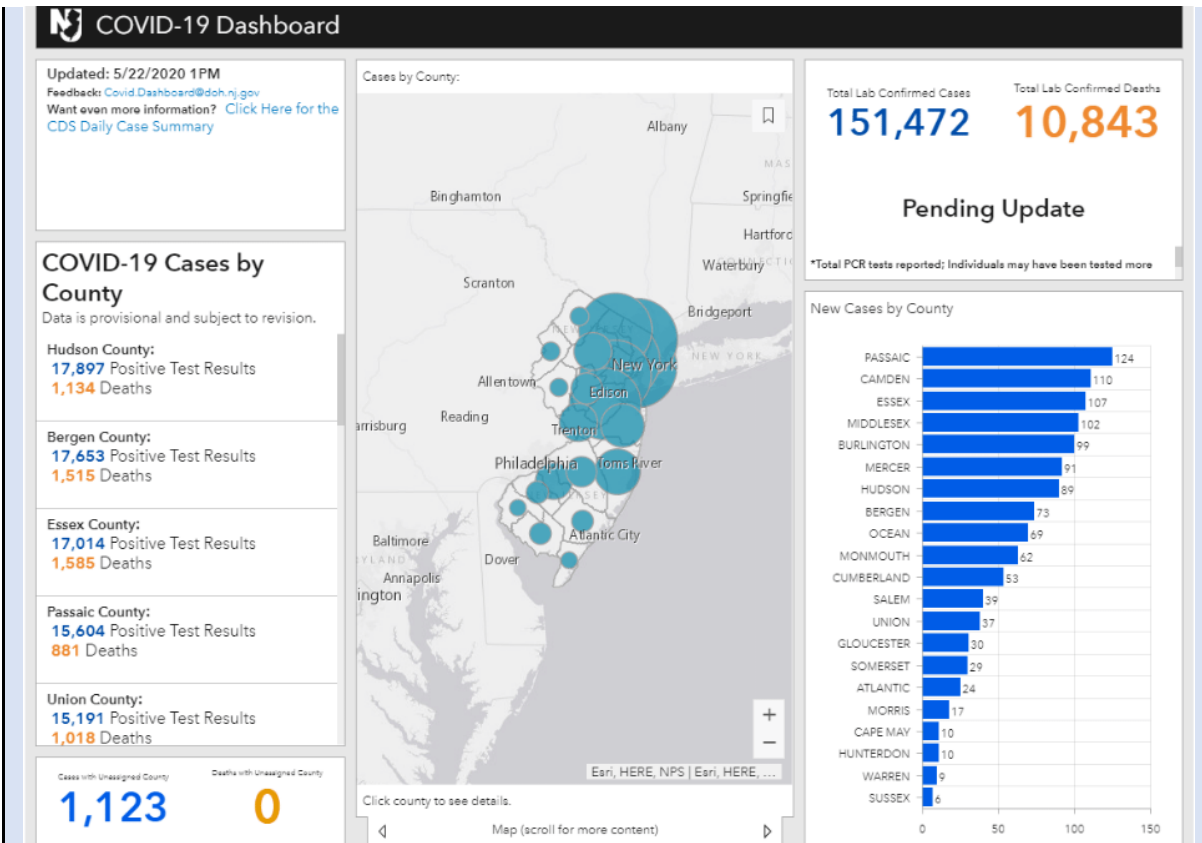
I'm not sure if my business needs to close or not due to the State's COVID-19 directives--what additional information or guidance is there?

 Written by Business.NJ.gov Team
Updated yesterday

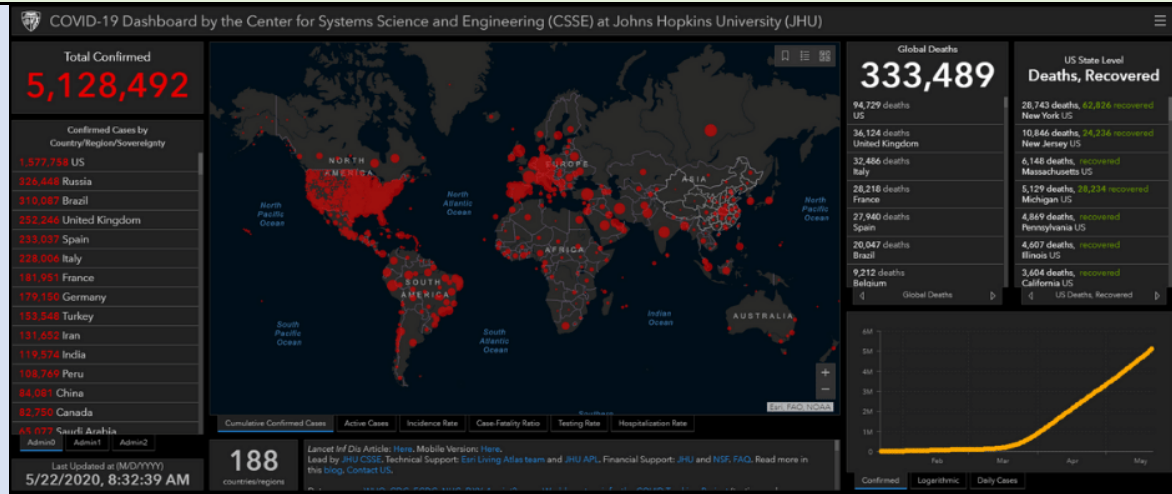
If I have a business that urgently needs workers, or if I'm a worker looking for a job, where can I go?

 Written by Business.NJ.gov Team
Updated in the last hour

New Jersey COVID-19 Dashboard



Global COVID-19 Dashboard with Total Recovery



New Jersey Governor Updates

[Governor Murphy, Walmart, and Quest Diagnostics Announce Partnership to Expand Testing Capacity in New Jersey](#)

The testing sites, which are supported by state and local officials, Walmart, and Quest Diagnostics, will test adults who meet Centers for Disease Control and state and local criteria on who should be tested, including first responders, health care providers, and others with symptoms of COVID-19, and those in high-risk groups without symptoms.

<https://nj.gov/governor/news/news/562020/approved/20200520a.shtml>

[Governor Murphy and Superintendent Callahan Announce Administrative Order Authorizing In-Person Sales at Car Dealerships, Motorcycle Dealerships, Boat Dealerships, and Bike Shops](#)

Governor Phil Murphy and Superintendent of the State Police Colonel Patrick Callahan today announced an Administrative Order authorizing in-person sales to resume at car dealerships, motorcycle dealerships, boat dealerships, and bike shops, by appointment only and with social distancing measures in place.

<https://nj.gov/governor/news/news/562020/approved/20200519d.shtml>

CCNJ VIRTUAL EVENT: BEST PRACTICES IN INDUSTRIAL HYGIENE IN THE AGE OF COVID-19 AND BEYOND



Chemistry Council OF NEW JERSEY *virtual* **EVENTS** 

Best Practices in Industrial Hygiene in the Age of COVID-19 And Beyond
Wednesday, May 27 @ 10:15AM
Free to all staff at CCNJ member companies.
Register today.

Presentations By

CDC (COVID-19) Guidance

[New: Interim Guidance for Implementing Safety Practices for Critical Infrastructure Workers Who May Have Had Exposure to a Person with Suspected or Confirmed COVID-19](#)

To ensure continuity of operations of essential functions, CDC advises that critical infrastructure workers may be permitted to continue work following potential exposure to COVID-19, provided they remain asymptomatic and additional precautions are implemented to protect them and the community.

[Click here for CDC Guidance](#)

[Discontinuation of Isolation for Persons with COVID-19 Not in Healthcare Settings \(Interim Guidance\)](#)

Update CDC guidance providing additional information for asymptomatic persons with laboratory-confirmed COVID-19 on limiting contact and wearing a face covering after isolation to prevent spread.

[Click here for update CDC Guidance](#)

[Use of Cloth Face Coverings to Help Slow the Spread of COVID-19](#)

CDC recommends wearing cloth face coverings in public settings where other social distancing measures are difficult to maintain (e.g., grocery stores and pharmacies), especially in areas of significant community-based transmission.

[Click here for CDC Cloth Face Coverings Guidance](#)

[Coronavirus Disease 2019 \(COVID-19\) Situation Summary](#)

CDC is responding to an outbreak of respiratory disease caused by a novel (new) coronavirus that was first detected in China and which has now been detected in more than 100 locations internationally, including in the United States. The virus has been named “SARS-CoV-2” and the disease it causes has been named “coronavirus disease 2019” (abbreviated “COVID-19”).

[Click here for CDC Situation Summary](#)

[Interim Guidance for Businesses and Employers](#)

Plan, Prepare and Respond to Coronavirus Disease 2019

[Click here for CDC Business Guidance](#)

[Get Your Mass Gatherings or Large Community Events Ready Interim Guidance for Coronavirus Disease 2019 \(COVID-19\)](#)

CDC, in accordance with its guidance for [large events and mass gatherings](#), recommends that for the next 8 weeks, organizers (whether groups or individuals) cancel or postpone in-person events that consist of 50 people or more throughout the United States.

[Click here for CDC Guidance](#)

[Human Infection with 2019 Novel Coronavirus Person Under Investigation \(PUI\) and Case Report Form](#)

CDC Personal Under Investigation Form

[Click here for Reporting Form](#)

[Keeping the workplace safe Encourage your employees to](#)

What every American and community can do now to decrease the spread of the coronavirus

[Click here for infographics](#)

[Implementation of Mitigation Strategies for Communities with Local COVID-19 Transmission](#)

When a novel virus with pandemic potential emerges, nonpharmaceutical interventions, which will be called community mitigation strategies in this document, often are the most readily available interventions to help slow transmission of the virus in communities.

[Click here for CDC Mitigation Strategies](#)

FEMA / DHS/ NJ OEM/HSP Guidance

[Planning Considerations for Organizations in Reconstituting Operations During the COVID-19 Pandemic](#)

An organization may need to adapt and adopt new processes, address physical and psychological impacts to personnel, recover records and files, reestablish communications and IT equipment, or acquire specialized equipment to regain full functionality. Planning for reconstitution requires expertise and coordination from the entire organization and coordination with partners and stakeholders throughout the community.

<https://www.fema.gov/news-release/2020/04/30/planning-considerations-organizations-reconstituting-operations-during-covid>

[Coronavirus \(COVID-19\) Pandemic: Addressing PPE Needs in Non-Healthcare Setting](#)

This guidance summarizes how organizations should consider and manage their personal protective equipment (PPE) needs while ensuring the protection of workers during the coronavirus (COVID-19) pandemic response.

<https://www.fema.gov/news-release/2020/04/22/coronavirus-covid-19-pandemic-addressing-ppe-needs-non-healthcare-setting>

[FEMA Administrator April 15, 2020, letter to Emergency Managers](#)

First, let me thank you for all the incredible things you have done, and continue to do, for the American people. I am thankful for your tireless efforts under these unprecedented and demanding circumstances and for embrace of the guiding principle: locally executed, state-managed, and federally supported emergency response and recovery. Your heroic and extraordinary efforts across the country inspire me daily. Please keep up the great work.

<https://www.fema.gov/news-release/2020/04/15/fema-administrator-april-15-2020-letter-emergency-managers>

[IDENTIFYING CRITICAL INFRASTRUCTURE DURING COVID-19](#)

Functioning critical infrastructure is imperative during the response to the [COVID-19](#) emergency for both public health and safety as well as community well-being. Certain critical infrastructure industries have a special responsibility in these times to continue operations.

[Click here for CISA Guidance](#)

[Coronavirus Rumor Control](#)

The purpose of this FEMA page is to help the public distinguish between rumors and facts regarding the response to coronavirus (COVID-19) pandemic. Rumors can easily circulate within communities during a crisis, stay informed with our updated myth vs. facts related to the federal (COVID-19) response.

[Click here for FEMA Rumor Control Site](#)

OSHA & Labor

[Discretion in Enforcement when Considering an Employer's Good Faith Efforts During the Coronavirus Disease 2019 \(COVID-19\) Pandemic](#)

In light of the coronavirus disease 2019 (COVID-19) pandemic, OSHA understands that some employers may face difficulties complying with OSHA standards due to the ongoing health emergency. Widespread business closures, restrictions on travel, limitations on group sizes, facility visitor prohibitions, and stay-at-home or shelter-in-place requirements may limit the availability of employees, consultants, or contractors who normally provide training, auditing, equipment inspections, testing, and other essential safety and industrial hygiene services. Business closures and other restrictions and limitations may also preclude employee participation in training even when trainers are available. In other situations, access to medical testing facilities may be limited or suspended.

<https://www.osha.gov/memos/2020-04-16/discretion-enforcement-when-considering-employers-good-faith-efforts-during>

[U.S. DEPARTMENT OF LABOR ENDS TEMPORARY NON-ENFORCEMENT OF PAID LEAVE PROTECTIONS TO HELP AMERICAN WORKERS DURING CORONAVIRUS PANDEMIC](#)

The U.S. Department of Labor announced today the end of the temporary period of non-enforcement of paid leave protections under the Families First Coronavirus Response Act (FFCRA).

<https://www.dol.gov/newsroom/releases/whd/whd20200420>

[New Worker Adjustment and Retraining Notification Act Frequently Asked Questions](#)

WARN FAQs – The Worker Adjustment and Retraining Notification (WARN) Act is enforced by private legal action in the applicable U.S. District Court. The role of the U.S. Department of Labor is to provide guidance and information about the WARN Act; however, such guidance is not binding in the courts and does not replace the advice of an attorney.

<https://www.dol.gov/agencies/eta/layoffs/warn>

[COVID-19 Guidance for the Manufacturing Industry Workforce](#)

OSHA is committed to protecting the health and safety of America's workers and workplaces during these unprecedented times. The agency will be issuing a series of industry-specific alerts designed to keep workers safe.

<https://www.osha.gov/Publications/OSHA4002.pdf>

[Families First Coronavirus Response Act: Employer Paid Leave Requirements](#)

The Families First Coronavirus Response Act (FFCRA or Act) requires certain employers to provide their employees with paid sick leave or expanded family and medical leave for specified reasons related to COVID-19.^[1] The Department of Labor's (Department) Wage and Hour Division (WHD) administers and enforces the new law's paid leave requirements. These provisions will apply from the effective date through December 31, 2020.

[Click here for more information](#)

[UPDATED COVID-19 SCENARIOS & BENEFITS AVAILABLE](#)

NJ Labor & Workforce Development

This UPDATED chart is an easy guide for several COVID-19 scenarios and what benefits are available for each, such as earned sick leave, unemployment insurance, temporary disability/family leave insurance, and workers' compensation.

[Click here for document](#)

[NJDOL Benefits and the Coronavirus \(COVID-19\): What You Should Know](#)

New Jersey has among the most comprehensive [Earned Sick Leave](#), [Temporary Disability](#) and [Family Leave Insurance](#) laws in the country, which cover all employees – full-time, part-time, temporary and seasonal.

[Click here for NJ Labor COVID-19 Site](#)

[Office for Civil Rights, U.S. Department of Health and Human Services BULLETIN: HIPAA Privacy and Novel Coronavirus](#)

In light of the Novel Coronavirus (2019-nCoV) outbreak, the Office for Civil Rights (OCR) at the U.S. Department of Health and Human Services (HHS) is providing this bulletin to ensure that HIPAA covered entities and their business associates are aware of the ways that patient information may be shared under the HIPAA Privacy Rule in an outbreak of infectious

disease or other emergency situation, and to serve as a reminder that the protections of the Privacy Rule are not set aside during an emergency.

[Click here for February 2020 Bulletin](#)

[Discretion in Enforcement when Considering an Employer's Good Faith Efforts During the Coronavirus Disease 2019 \(COVID-19\) Pandemic](#)

In light of the coronavirus disease 2019 (COVID-19) pandemic, OSHA understands that some employers may face difficulties complying with OSHA standards due to the ongoing health emergency. Widespread business closures, restrictions on travel, limitations on group sizes, facility visitor prohibitions, and stay-at-home or shelter-in-place requirements may limit the availability of employees, consultants, or contractors who normally provide training, auditing, equipment inspections, testing, and other essential safety and industrial hygiene services. Business closures and other restrictions and limitations may also preclude employee participation in training even when trainers are available. In other situations, access to medical testing facilities may be limited or suspended.

<https://www.osha.gov/memos/2020-04-16/discretion-enforcement-when-considering-employers-good-faith-efforts-during>

[Enforcement Guidance for Use of Respiratory Protection Equipment Certified under Standards of Other Countries or Jurisdictions During the Coronavirus Disease 2019 \(COVID-19\) Pandemic](#)

This memorandum provides interim guidance to Compliance Safety and Health Officers (CSHOs) for enforcing the Respiratory Protection standard, 29 CFR § 1910.134, and certain other health standards, with regard to supply shortages of disposable N95 filtering facepiece respirators (FFRs). Specifically, it outlines enforcement discretion to permit the use of FFRs and air-purifying elastomeric respirators that are either:

<https://www.osha.gov/memos/2020-04-03/enforcement-guidance-use-respiratory-protection-equipment-certified-under>

[OSHA RULE RELAXATION FOR EXPIRED RESPIRATORS](#)

OSHA has released an FAQ document about OSHA's Rule Relaxation For Fit Testing and Use of Expired Respirators.

[Click here to access the document.](#)

[OSHA Guidance on Preparing Workplaces for COVID-19](#)

To reduce the impact of COVID-19 outbreak conditions on businesses, workers, customers, and the public, it is important for all employers to plan now for COVID-19.

[Click here for OSHA Guidance](#)

EPA / NJDEP / Health Guidance

[NJDEP COVID-19 Regulatory Compliance](#)

NJDEP has created a COVID-19 Portal for the regulated community.

<https://www.nj.gov/dep/covid19regulatorycompliance/>

[COMPLIANCE ALERT: ENVIRONMENTAL COMPLIANCE AND ENFORCEMENT DURING COVID-19](#)

This advisory is directed to any person or entity regulated by the Department of Environmental Protection (DEP) who believes that their ability to comply with any environmental law, rule, regulation, permit or approval administered by the DEP may be

constrained by circumstances related to the Public Health Emergency declared by Governor Phil Murphy due to the novel coronavirus (COVID-19) pandemic.

<https://www.nj.gov/dep/enforcement/advisories/2020-08.pdf>

[EPA Announces Enforcement Discretion Policy for COVID-19 Pandemic](#)

The U.S. Environmental Protection Agency (EPA) is mindful of the health and safety of the public, as well as our staff, and those of Federal Agencies, State and Local Governments, Tribes, Regulated Entities, Contractors, and Non-governmental Organizations during the COVID-19 pandemic. The agency is taking these important considerations into account as we all continue our work to protect human health and the environment. Accordingly, EPA is announcing a temporary policy regarding EPA enforcement of environmental legal obligations during the COVID-19 pandemic.

[Click here for more information](#)

[DEP issues guidance for Public Water Systems and Wastewater Monitoring, Licensed Operator and Certified Laboratory issues due to the COVID-19 Pandemic](#)

This advisory affects public drinking water systems and Category A (individual permits for domestic discharge) and ASC (general permit authorizations for school discharge) NJPDES surface water discharge permitted facilities that are required to perform routine monitoring pursuant to the state and federal regulations and their NJPDES permits where applicable.

[Click here for guidance](#)

[COVID-19: Information for Schools and Businesses](#)

To prepare for possible community transmission of COVID-19, the most important thing for schools to do now is plan and prepare. As the global outbreak evolves, schools should prepare for the possibility of community-level outbreaks. Schools want to be ready if COVID-19 does appear in their communities.

https://www.nj.gov/health/cd/topics/covid2019_schoolbusiness.shtml

[New Jersey Department of Health COVID-19: A Guide for Businesses March 2, 2020](#)

Many employers and businesses in New Jersey are concerned about the current outbreak of the 2019 Novel Coronavirus (COVID-19) and potential impacts to their business communities and wish to take appropriate steps to mitigate any risks. The Centers for Disease Control and Prevention (CDC) is working hard to learn as much as possible about this COVID-19 so that we can better understand how it spreads and characterize its associated illness. The New Jersey Department of Health is also working hard to develop guidance and education materials, in the face of evolving information.

https://www.nj.gov/health/cd/documents/topics/NCOV/Guide%20for%20businesses_3-4-2020.pdf

[Directory of Local Health Departments](#)

Suspected cases should be reported IMMEDIATELY to the local health department (LHD) where the patient resides. If the patient's residence is unknown, report to your own local health department. Local health departments are available 24/7/365.

<https://www.nj.gov/health/lh/documents/LocalHealthDirectory.pdf>

[Interim Exposure Categories for Asymptomatic Individuals with Possible Exposure to COVID-2019](#)

This interim guidance is effective as of February 3, 2020 and does not apply retrospectively to people who have been in China during the previous 14 days and are already in the United States, or those being managed as part of a contact investigation.

[Click here for guidance document](#)

Other NJ/Federal Resources

[New Jersey COVID-19 Information Hub](#)

State Official Site for all COVID-19 Related Information

[Click here to access HUB](#)

[NJEDA Announces New Initiatives to Support Businesses Impacted by COVID-19](#)

The New Jersey Economic Development Authority (NJEDA) Board today approved a suite of new programs designed to support businesses and workers facing economic hardship due to the outbreak of the novel coronavirus COVID-19.

[Click here for more information](#)

[Federal Motor Carrier Safety Administration](#)

FAQ: Expanded Emergency Declaration Under 49 CFR § 390.23 No. 2020-002 (Relating to COVID-19)

[Click here to access FMCSA](#)

NOTICE OF ENFORCEMENT POLICY REGARDING TRAINING REQUIREMENTS

The U.S. Department of Transportation's Pipeline and Hazardous Materials Safety Administration (PHMSA) understands that many hazardous materials (hazmat) employers may be experiencing difficulty in either obtaining or providing recurrent training as required by the Hazardous Materials Regulations (HMR, 49 CFR Parts 171-180) due to the Coronavirus Disease 2019 (COVID-19) outbreak.

[Click here to access PHMSA document](#)

Related Industry Resources

[CCNJ Covid-19 Updates](#)

Access past CCNJ updates via CCNJ News Site.

<https://tinyurl.com/CCNJCOVID-19Updates>

[ACC Coronavirus Resource Center](#)

ACC is working on behalf of the U.S. chemical industry and its more than 500,000 employees to ensure that together we all embrace public health guidance from the Centers for Disease Control and multiple governmental authorities to help minimize the spread of the COVID-19 virus.

<https://www.americanchemistry.com/COVID-19/>

[The Latest on the Biopharmaceutical Industry's Efforts to Beat Coronavirus](#)

PHRMA

More than half of PhRMA members have R&D for potential treatments and vaccines under way or are providing donations of medicines and critical medical supplies as well as providing financial donations to support patients and first responders in addressing this evolving crisis.

<https://www.phrma.org/Coronavirus>

[Biopharmaceutical Innovators Lead the Charge in Fight Against Coronavirus](#)

Stay up-to-date with the latest information from government agencies, NGOs, and other helpful organizations

<https://www.bio.org/policy/human-health/vaccines-biodefense/coronavirus>

[NACD Coronavirus Resource Center](#)

The National Association of Chemical Distributors COVID-19 Resource Page

<https://www.nacd.com/media-center/coronavirus-resource-center/>

[COVID-19 RESOURCES FOR THE SPECIALTY CHEMICAL INDUSTRY](#)

SOCMA continues to monitor the impacts of COVID-19 on business continuity related to manufacturing/operations and regulatory and legislative mandates. The following resources have been developed from staff research or shared by SOCMA member companies. The information is available for adoption and reference.

<https://www.socma.org/covid-19/>