

# Coronavirus (COVID-19) Information

**Update 8: March 21, 2020**

Good afternoon,

Governor Murphy has enacted [Executive Order No. 107](#) "Stay at Home" Order. **Work at construction sites may continue, as can manufacturing, trucking, and transportation operations. Only essential travel allowed.**

[Click HERE for Executive Order No. 107](#)

[Click HERE for Executive Order No. 108](#)

As we mentioned yesterday, we expected a strong encouragement to move every employee to work from home where possible. All businesses or non-profits in the State, whether closed or open to the public, must accommodate their workforce, wherever practicable, for telework or work-from-home arrangements. For purposes of this order, "telework" means the practice of working from home or alternative locations closer to home through the use of technology that equips the individual to access necessary materials.

**Where teleworking or working from home is not an option, there is a strong request to reduce staff on site to the minimal number to ensure safe operations.** To the extent a business or non-profit has employees that cannot perform their functions via telework or work-from-home arrangements, **the business or non-profit should make best efforts to reduce staff on site to the minimal number necessary to ensure that essential operations can continue.** Examples of employees who need to be physically present at their work site in order to perform their duties include, but are not limited to, law enforcement officers, fire fighters, and other first responders, cashiers or store clerks, construction workers, utility workers, repair workers, warehouse workers, lab researchers, information technology maintenance workers, janitorial and custodial staff, and certain administrative staff.

**Manufacturing, industrial, logistics, ports, heavy construction, shipping, food production, food delivery, and other commercial operations may continue operating, but as explained above, they should limit staff on site to the minimal number to ensure that essential operations can continue.**

**Employees reporting to work are permitted to travel to and from their place of business. Businesses are encouraged to give each employee a letter indicating that the employee works in an industry permitted to continue operations.**

Of particular note, Governor Murphy also signed [Executive Order No. 108](#), **which invalidates any county or municipal restriction that in any way will or might conflict with any of the provisions of [Executive Order No. 107](#).** This is effective at 9 p.m. on

Saturday, March 21 as well. The only exceptions are two categories over which municipalities or counties may impose any additional restrictions: 1) online marketplaces for arranging or offering lodging and 2) municipal or county parks.

The state has created [this website: How do Executive Orders No. 107 and 108 on closures and social distancing affect my business](#) to answer any business questions.

As expected, there is a backlog getting new companies registered into the **Private Sector Essential Employee Registration Project**. And earlier today, the system used to input new companies was down. OEM is doing all it can to process new companies, but as you can imagine the demand has increased tenfold. The list I create and send every evening is getting through to the main person in charge of the program. They are going through the list but were delayed because of the down system. Just a reminder this is a program for Critical Infrastructure facilities. **Please, do not forward my email to your service providers, as I will not be able to get them access to the program at this time.** It is likely that OEM will reach out to you via phone first, and even over the weekend. **We ask for everyone's patience with this if you have submitted your request and haven't heard from OEM.**

**We suggest that you continue to remind your employees to have their work ID accessible while driving to and from work, so they can present it with their license if necessary and provide them with a letter as stated above. OEM may provide a letter template, if they do, we will forward it immediately. But we suggest for now to follow the [DHS Guidance](#).**

There are a lot of rumors going around about what may or may not happen. DHS has informed us that there is a coordinated campaign to distribute misinformation about COVID-19 and response. They suggest accessing information from official state or federal sites only, and this site [Coronavirus Rumor Control](#) has been also set up by FEMA.

Below you will find new information **highlighted in blue** added since the last update. As well, take some time and explore the many links and information provided below, as it can be great resource for your company and provide many answers to questions you might have.

[To access previous updates click here.](#)

Learn what precautions you can take about the **Coronavirus**  
Call the **NJ Coronavirus & Poison Center Hotline** at  
**1-800-222-1222** or **1-800-962-1253** if using out-of-state phone line  
Trained healthcare professionals are standing by to answer your call **24/7** OR  
visit [nj.gov/health](http://nj.gov/health)

**In support of ongoing COVID-19 efforts, the State Emergency Operations Center has made available an ESF 7 Remote Access Line for private sector inquiries. ESF 7 Remote Access Line: 609-963-6817. For response and resource related requests, OHSP encourages you to work with your local first responder agencies, or your County Office of Emergency Management. [Click here to access the NJOEM County Coordinators directory](#) to find contact information for the local county OEM where your facility is located.**

# COVID-19 UPDATE

## NEW COVID-19 RESOURCES PORTAL FOR ALL BUSINESSES:

[cv.business.nj.gov](http://cv.business.nj.gov)



### New Jersey COVID-19 Dashboard

NJ COVID-19 Dashboard Updated as of 3/21/2020 1PM

#### COVID-19 Cases by County

Data is provisional and subsequent to revision.  
140 Positives Pending Further Information

**Bergen County:**  
363 Positive Test Result(s)

**Middlesex County:**  
116 Positive Test Result(s)

**Essex County:**  
107 Positive Test Result(s)

**Hudson County:**  
97 Positive Test Result(s)

**Monmouth County:**  
92 Positive Test Result(s)

**Union County:**  
81 Positive Test Result(s)

**Passaic County:**  
67 Positive Test Result(s)

**Morris County:**  
64 Positive Test Result(s)

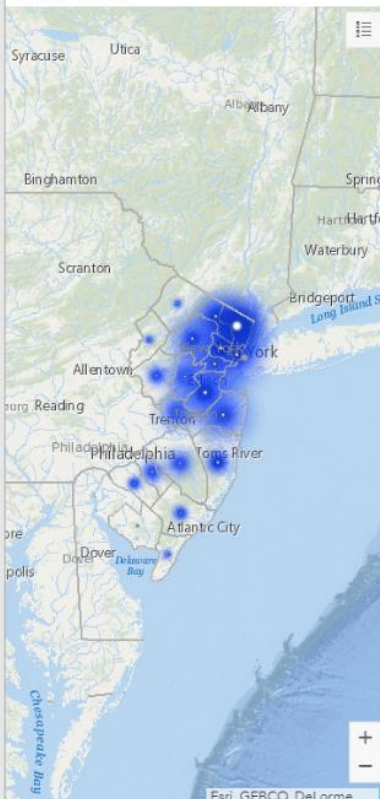
**Ocean County:**  
62 Positive Test Result(s)

**Somerset County:**  
34 Positive Test Result(s)

**Mercer County:**  
30 Positive Test Result(s)

**Burlington County:**

Cases by County:



Click county to see details.

New Jersey Positives

1,327

New Jersey Deaths

16

#### Hotline

Calls in Past 24 Hours

520

211 Calls

3,587

Since March 18

Total Calls To Date

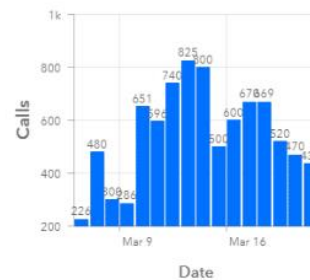
10,049

Text Alert Enrollments

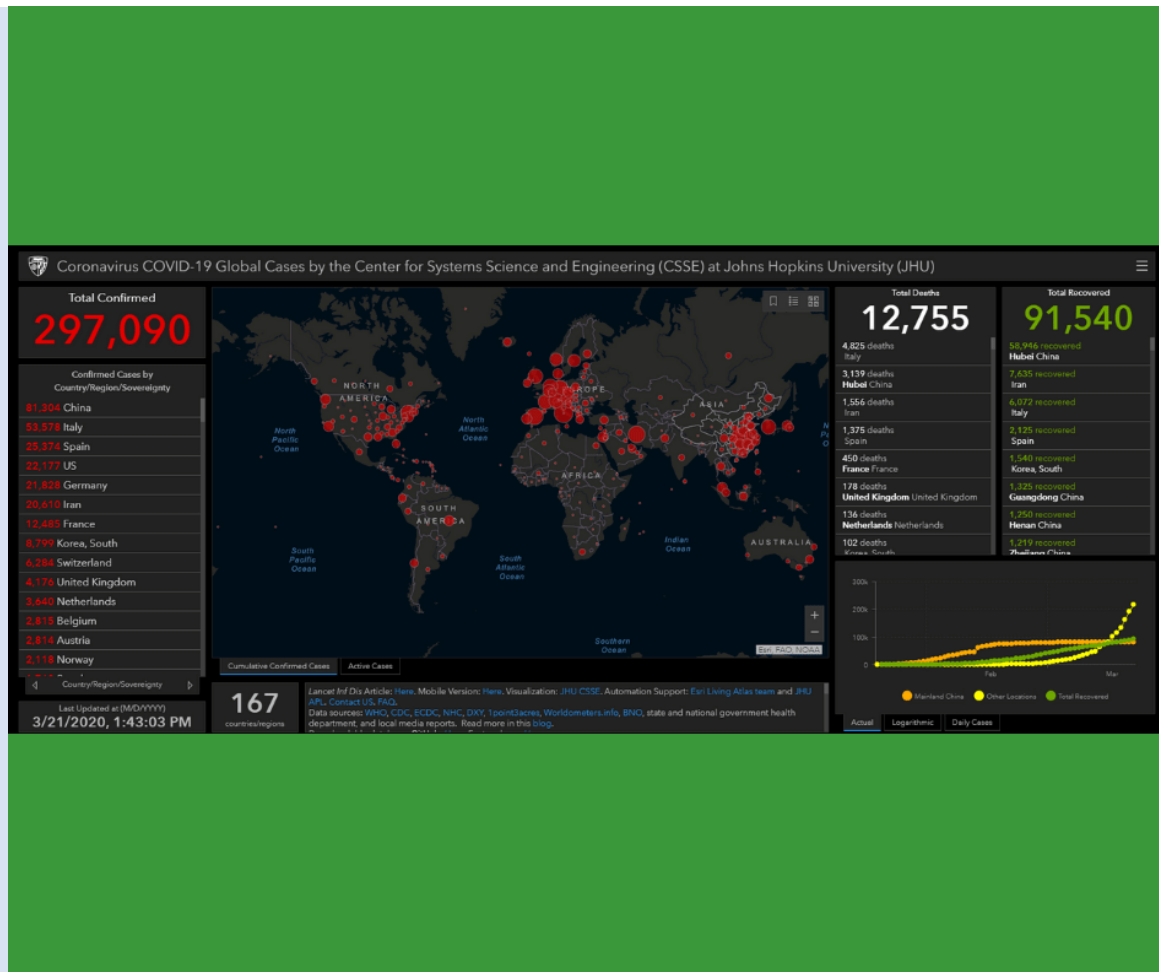
43,380

\*Not NJ COVID-19 211 to 888-211-3333

#### Calls/Day to COVID-19 Hotline



### Global COVID-19 Dashboard with Total Recovery



## New Jersey Governor Updates

### [Governor Murphy Announces Statewide Stay at Home Order, Closure of All Non-Essential Retail Businesses](#)

To mitigate the impact of COVID-19 and protect the capacity of New Jersey’s health care system for the state’s most vulnerable, Governor Phil Murphy today signed Executive Order No. 107, directing all residents to stay at home until further notice. The order provides for certain exceptions, such as obtaining essential goods or services, seeking medical attention, visiting family or close friends, reporting to work, or engaging in outdoor activities.

[Click here for release](#)

### [TRANSCRIPT: March 20th, 2020 Coronavirus Briefing Media](#)

Our asks are pretty much every time out more PPE to protect our extraordinary healthcare workers, the heroes, our first responders; secondly the boots on the ground as FEMA Region 2 has showed this week with extraordinary support. The Army Corps, potentially the VA; other actual, tangible sources. We mentioned with Dr. Esper the possibility to get some medical personnel from the Defense Department. And then, the third piece again is we’re going to need, as I said, we’re going to need a bigger boat. And we need a lot more money to allow us to continue to do what we’re doing.

[Click here for transcript](#)

[Governor Murphy Takes Action on COVID-19 Legislation](#)

Today, Governor Phil Murphy signed the following bills and resolutions into law

[Click here for release](#)

[Governor Murphy Signs Legislation Authorizing the EDA to Provide Grants During Periods of Emergency and to Extend Documentation Submission Deadlines](#)

In response to the ongoing COVID-19 pandemic, Governor Phil Murphy today signed legislation (A3845) that authorizes the New Jersey Economic Development Authority (NJEDA) to make grants during a state of emergency or a public health emergency declared by the Governor. The EDA will also be authorized to grant certain business documentation submission deadline extensions.

[Click here for release](#)

[New Jersey Department of Banking & Insurance Encourages Regulated Entities to Assist Residents & Businesses Affected by Disruptions Due to COVID-19](#)

As communities across the state have been negatively impacted in a variety of ways by the COVID-19 pandemic, the Department of Banking and Insurance issued a bulletin encouraging entities regulated by the department to work with and assist customers who have been adversely affected by COVID-19-related issues.

[Click here for release](#)

**CISA RELEASES GUIDANCE ON ESSENTIAL CRITICAL  
INFRASTRUCTURE WORKERS DURING COVID-19**

## IDENTIFYING CRITICAL INFRASTRUCTURE DURING COVID-19



There are 16 critical infrastructure sectors whose assets, systems, and networks, whether physical or virtual, are considered so vital to the United States that their incapacitation or destruction would have a debilitating effect on security, national economic security, national public health or safety, or any combination thereof. Presidential Policy Directive 21 (PPD-21); PPD-21 identifies 16 critical infrastructure sectors.

Please direct additional questions to [CISA.CAT@cisa.dhs.gov](mailto:CISA.CAT@cisa.dhs.gov).

[Download a PDF version of this Guidance](#)

### **CDC (COVID-19) Situation Summary Updated Regularly**

#### [Coronavirus Disease 2019 \(COVID-19\) Situation Summary](#)

CDC is responding to an outbreak of respiratory disease caused by a novel (new) coronavirus that was first detected in China and which has now been detected in more than 100 locations internationally, including in the United States. The virus has been named "SARS-CoV-2" and the disease it causes has been named "coronavirus disease 2019" (abbreviated "COVID-19").

[Click here for CDC Situation Summary](#)

#### [Interim Guidance for Businesses and Employers](#)

Plan, Prepare and Respond to Coronavirus Disease 2019

[Click here for CDC Business Guidance](#)

#### [White House: 15 Days To Slow The Spread](#)

The President's Coronavirus Guidelines for America -- 15 Days to Slow the Spread of Coronavirus (COVID-19)

[Click here for White House Document](#)

[Get Your Mass Gatherings or Large Community Events Ready Interim Guidance for Coronavirus Disease 2019 \(COVID-19\)](#)

CDC, in accordance with its guidance for [large events and mass gatherings](#), recommends that for the next 8 weeks, organizers (whether groups or individuals) cancel or postpone in-person events that consist of 50 people or more throughout the United States.

[Click here for CDC Guidance](#)

## **HIPAA Privacy, Labor Laws & CDC Reporting Form**

[Office for Civil Rights, U.S. Department of Health and Human Services BULLETIN: HIPAA Privacy and Novel Coronavirus](#)

In light of the Novel Coronavirus (2019-nCoV) outbreak, the Office for Civil Rights (OCR) at the U.S. Department of Health and Human Services (HHS) is providing this bulletin to ensure that HIPAA covered entities and their business associates are aware of the ways that patient information may be shared under the HIPAA Privacy Rule in an outbreak of infectious disease or other emergency situation, and to serve as a reminder that the protections of the Privacy Rule are not set aside during an emergency.

[Click here for February 2020 Bulletin](#)

[Human Infection with 2019 Novel Coronavirus Person Under Investigation \(PUI\) and Case Report Form](#)

CDC Personal Under Investigation Form

[Click here for Reporting Form](#)

[NJDOLE Benefits and the Coronavirus \(COVID-19\): What You Should Know](#)

New Jersey has among the most comprehensive [Earned Sick Leave](#), [Temporary Disability](#) and [Family Leave Insurance](#) laws in the country, which cover all employees – full-time, part-time, temporary and seasonal.

<https://www.nj.gov/labor/worker-protections/earnedsick/covid.shtml>

## **Government Resources**

- [New Jersey COVID-19 Information Hub](#)

State Official Site for COVID-19 Related Information

[Click here to access HUB](#)

- [Coronavirus Rumor Control](#)

The purpose of this FEMA page is to help the public distinguish between rumors and facts regarding the response to coronavirus (COVID-19) pandemic. Rumors can easily circulate within communities during a crisis, stay informed with our updated myth vs. facts related to the federal (COVID-19) response.

[Click here for FEMA Rumor Control Site](#)

- [OSHA Guidance on Preparing Workplaces for COVID-19](#)

To reduce the impact of COVID-19 outbreak conditions on businesses, workers, customers, and the public, it is important for all employers to plan now for COVID-19.

[Click here for OSHA Guidance](#)

- [COVID-19: Information for Schools and Businesses](#)

To prepare for possible community transmission of COVID-19, the most important thing for schools to do now is plan and prepare. As the global outbreak evolves, schools should prepare for the possibility of community-level outbreaks. Schools want to be ready if COVID-19 does appear in their communities.

[https://www.nj.gov/health/cd/topics/covid2019\\_schoolbusiness.shtml](https://www.nj.gov/health/cd/topics/covid2019_schoolbusiness.shtml)

- [New Jersey Department of Health COVID-19: A Guide for Businesses March 2, 2020](#)  
Many employers and businesses in New Jersey are concerned about the current outbreak of the 2019 Novel Coronavirus (COVID-19) and potential impacts to their business communities and wish to take appropriate steps to mitigate any risks. The Centers for Disease Control and Prevention (CDC) is working hard to learn as much as possible about this COVID-19 so that we can better understand how it spreads and characterize its associated illness. The New Jersey Department of Health is also working hard to develop guidance and education materials, in the face of evolving information.  
[https://www.nj.gov/health/cd/documents/topics/NCOV/Guide%20for%20businesses\\_3-4-2020.pdf](https://www.nj.gov/health/cd/documents/topics/NCOV/Guide%20for%20businesses_3-4-2020.pdf)
- [Directory of Local Health Departments](#)  
Suspected cases should be reported IMMEDIATELY to the local health department (LHD) where the patient resides. If the patient's residence is unknown, report to your own local health department. Local health departments are available 24/7/365.  
<https://www.nj.gov/health/lh/documents/LocalHealthDirectory.pdf>
- [Interim Exposure Categories for Asymptomatic Individuals with Possible Exposure to COVID-2019](#)  
This interim guidance is effective as of February 3, 2020 and does not apply retrospectively to people who have been in China during the previous 14 days and are already in the United States, or those being managed as part of a contact investigation.  
[Click here for guidance document](#)
- [Keeping the workplace safe Encourage your employees to](#)  
What every American and community can do now to decrease the spread of the coronavirus  
[Click here for infographics](#)
- [Implementation of Mitigation Strategies for Communities with Local COVID-19 Transmission](#)  
When a novel virus with pandemic potential emerges, nonpharmaceutical interventions, which will be called community mitigation strategies in this document, often are the most readily available interventions to help slow transmission of the virus in communities.  
[Click here for CDC Mitigation Strategies](#)

## Industry and Related Resources

- ACC [Coronavirus Resource Center](#)  
ACC is working on behalf of the U.S. chemical industry and its more than 500,000 employees to ensure that together we all embrace public health guidance from the Centers for Disease Control and multiple governmental authorities to help minimize the spread of the COVID-19 virus. This guidance for individuals is in the best interest of public health. It remains essential however, that key industries and sectors, including the chemical manufacturing sector, are able to maintain operations throughout this challenging time, continuing to provide the countless products needed for life-saving medical care, disinfectants, pharmaceuticals, biocides, personal protective gear, and the chlorine chemistry to protect our nation's drinking water.



<https://www.americanchemistry.com/COVID-19/>